

PROJECT SUMMARY

INDUSTRIAL & DISTRIBUTION

ADC Telecommunications		
5300 Valley Oak Build-out, Shakopee, MN		56,000
Adams Nut & Bolt		
Maple Grove, MN		61,400
Advance Machine		
Minneapolis, MN		198,500
Airport Business Plaza		
Mendota Heights, MN		118,000
Alliant Tech Systems AIDC		
Maple Grove, MN		136,000
Lab Design and Build-out, Maple Grove, MN		21,400
Amclyde Engineered Products		
St. Paul, MN		30,000
Andrews Knitting		
Vadnais Heights, MN		11,000
Appleside Orchards		
Process Facility, Rosemount, MN		7,800
Aries Precision Sheet Metal		
St. Paul, MN		40,000
1999 Williams Hill Facility, St. Paul, MN		110,000
Arion Corporation		
Delano, MN		24,000
AT&T		
Bloomington, MN		28,000
Brooklyn Park, MN		62,100
Plymouth, MN		12,000
St. Paul, MN		24,000
Aveda Pilot Complex		
Lab, Addition & Renovation		10,700
Ball Brothers		
Research Corporation, Blaine, MN		82,000
Phase II Remodeling, Blaine, MN		101,800
Belae Brands		
Shakopee, MN		150,000
Benco		
St. Paul, MN		39,200
Best Buy		
Distribution Center (Client Consulting) - Ardmore, OK		N/A
Data Center, Computer Room - Ardmore, OK		1,500
Data Center - Bloomington, MN		25,600
Distribution Center - Chino, CA		350,000



Advanced Machine



Aries Precision



Aveda Pilot Complex



Belae Brands

PROJECT SUMMARY
INDUSTRIAL & DISTRIBUTION

Bioplasty, Incorporated	
White Bear Lake, MN	55,000
<hr/>	
Bix Fruit	
St. Paul, MN	58,400
<hr/>	
BJ Transport	
Afton, MN	30,000
<hr/>	
Bureau of Engraving	
Minneapolis, MN	170,000
Addition, Minneapolis, MN	40,000
<hr/>	
Cannon Equipment	
Rosemount, MN	99,600
<hr/>	
Capital Woodworking	
St. Paul, MN	52,300
<hr/>	
Carlson Business Center	
Plymouth, MN	562,000
<hr/>	
Celestica, Incorporated	
Rochester, MN	250,000
<hr/>	
Challenge Printing	
Eden Prairie, MN	45,000
Expansion & Remodel, Eden Prairie, MN	10,000
<hr/>	
Classic Manufacturing Company	
Oakdale, MN	30,000
<hr/>	
Collins Communications Systems	
St. Paul, MN	20,000
<hr/>	
Comtal Machine & Engineering	
White Bear Township, MN	100,000
<hr/>	
Consolidated Electric	
St. Paul, MN	7,500
<hr/>	
Control Data Corporation	
Business and Tech Center, Blaine, MN	200,000
ETC Tenant Spaces, Blaine, MN	240,000
World Distribution Center Office/Warehouse, Blaine, MN	287,000
DI Remodeling, Minneapolis, MN	14,500
Rooftop Greenhouse, Minneapolis, MN	20,000
River Edge School Conversion, Bloomington, MN	20,000
Printed Circuits, St. Louis Park, MN	21,400
Magnetic Peripherals Inc., Rapid City, SD	40,000
Automated Warehouse Addition, Rapid City, SD	68,600
General Dynamics Inc., San Diego, CA	80,000
Magnetic Peripherals Inc. - Phase II, San Antonio, TX	160,000



Bioplasty, Incorporated



Bureau of Engraving



Carlson Business Center



Cannon Equipment

PROJECT SUMMARY
INDUSTRIAL & DISTRIBUTION

Crawford & Company Atlanta, GA	22,000
Crosstown 10 Brooklyn Park, MN	140,500
Crosstown 12 Brooklyn Park, MN	325,000
DRI Industries Minneapolis, MN	125,600
Egan Companies Brooklyn Park, MN	117,600
Elk River Municipalities Elk River, MN	4,000
Entegris Plant 3, Chaska, MN	88,600
EMC Corporation St. Paul, MN Phase II 1997 New Facility	31,000 25,000 124,800
Emmer Brothers Office/Warehouse Billings, MT	40,000
Excelsior-Henderson Motorcycle Manufacturing Company Belle Plaine, MN	162,000
ev3 Plymouth, MN	63,000
Fairmont Foods Freezer Building Woodbury, MN	26,000
Fast Grow Inc. St. Paul, MN	28,000
Filtration Engineering Champlin, MN Phase II	11,500 14,500
Foley-United (Foley-Belsaw) River Falls, WI 1999 Addition	40,000 43,600
Fuller Road Business Center Eden Prairie, MN	70,000
General Electric Eagan, MN	38,000



Celestica, Incorporated



Comtal Manufacturing



Crosstown 10



Egan Companies

PROJECT SUMMARY
INDUSTRIAL & DISTRIBUTION

Gopher Electronics	
Little Canada, MN	40,000
<hr/>	
Gould, Inc.	
Acid Tower, St. Paul, MN	14,000
Grid Cast Building, Salem, OR	18,000
Locker Room, Salem, OR	4,000
<hr/>	
Grand Oaks 8	
Eagan, MN	40,000
<hr/>	
Hancock Nelson Mercantile Co.	
St. Paul, MN	100,600
<hr/>	
H & F Manufacturing	
St. Paul, MN	60,000
<hr/>	
Harris Contracting	
St. Paul, MN	60,000
<hr/>	
Herold Precision Metals	
White Bear Township, MN	55,000
<hr/>	
Hoffman Electric	
St. Paul, MN	65,000
<hr/>	
Hoffman Engineering	
Anoka, MN	104,000
<hr/>	
Honeywell Inc.	
Mezzanine/Cafeteria Remodel, Golden Valley, MN	23,700
Toilet Room/Compressor Room, Golden Valley, MN	12,500
Exterior Wall Upgrade, Golden Valley, MN	110,000
<hr/>	
Hutchinson Technology Inc.	
Research & Development Facility, Hutchinson, MN	170,000
<hr/>	
Imation	
Office & Lab Remodel, Oakdale, MN	40,000
<hr/>	
Impressions, Inc.	
Hutchinson, MN	55,000
<hr/>	
Innovex	
Maple Plain, MN	95,000
<hr/>	
J & B Wholesale	
St. Michael, MN	27,000
Phase II	30,500
2000 Cooler Addition	50,000
<hr/>	
J.E. Brass Co.	
Eden Prairie, MN	22,500



ev3



Excelsior-Henderson



Grand Oaks 8



Hutchinson Technology Inc .

PROJECT SUMMARY
INDUSTRIAL & DISTRIBUTION

Loram Maintenance of Way, Inc.

Medina, MN	
Addition	24,500
2007-09 Addition & Remodel/LEED® Silver Certified	150,300

Lunar Pointe

Eagan, MN	188,800
-----------	---------

Mack Engineering

St. Paul, MN	35,000
--------------	--------

Marvin Windows and Doors

Corporate Offices, Warroad, MN	48,000
Building #2A, Warroad, MN	35,000
Building #7, Warroad, MN	900,000

Material Processing Corporation

Eagan, MN	50,000
-----------	--------

Metalcote Grease & Oil

Master Planning, St. Paul, MN	48,000
-------------------------------	--------

Medtronic Perfusion Systems (Avecor)

Brooklyn Park, MN	99,800
-------------------	--------

Microvena Corporation

White Bear Township, MN (Not Constructed)	75,000
---	--------

MinnTech Corporation

Minneapolis, MN	40,000
Glutaraldehyde Facility, Plymouth, MN	2,200

Molecular Genetics, Inc.

Minnetonka, MN	22,500
----------------	--------

Multek Multilayer Technology

Renovation, Expansion, Roseville, MN	141,200
--------------------------------------	---------

Murphy Motor Freight Terminals

Rockford, IL	50,000
St. Paul, MN	500,000
Cleveland, OH	50,000
Buffalo, NY	50,000
Albert Lea, MN	20,000

NBS Company

Eagan, MN	50,000
-----------	--------

New Flyer Industries of America

St. Cloud, MN	335,000
---------------	---------

Northwest Products Co.

Minneapolis, MN	60,000
-----------------	--------



Innovex



Loram Maintenance of Way, Inc.



Medtronic Perfusion Systems (Avecor)



New Flyer Bus Company

PROJECT SUMMARY
INDUSTRIAL & DISTRIBUTION

O'Keefe Cabinets River Falls, WI	40,000
Olmsted County Recycling Center Rochester, MN	19,000
Osmonics, Inc. Minnetonka, MN	91,000
Pace Laboratories Golden Valley, MN	60,000
Par Aide Products Company Vadnais Heights, MN	25,000
Park 2000 Shakopee, MN	382,100
Pitney Bowes Bloomington, MN	38,000
PMT Corporation Chanhassen, MN	47,600
Plymouth Business Center Phase V Plymouth, MN	124,200
Plymouth Business Center Phase VI Plymouth, MN	70,000
Polaris, Inc. Roseau, MN Product Development Center, Wyoming, MN/LEED® Certified	57,600 148,000
Porous Media Corporation White Bear Lake, MN	84,000
R&D Systems/Techne Lab Minneapolis, MN	84,000
River Falls Economic Development Corporation Building I, River Falls, WI	25,000
Road Tool St. Paul, MN	135,000
Rosemount Inc. Burnsville, MN	135,000
S & T Office Products Office/Showroom, St. Paul, MN	44,700
Schwing America Inc. White Bear Lake, MN	45,200



Pace Laboratories



Park 2000



Plymouth Business Center



Polaris, Inc.

PROJECT SUMMARY
INDUSTRIAL & DISTRIBUTION

Schadegg Mechanical
 South St. Paul, MN 23,100

Seagate Technology
 Design Center, Longmont, CO 460,000
 Advanced Storage Architecture, Colorado Springs, CO 35,000
 RHO Division Ext. Renovation & Int. Remodel, Bloomington, MN 22,700
 Research & Development Facility, Rochester, MN 18,000
 TCO Design Center, Shakopee, MN 410,000
 Research & Development Facility, Pittsburgh, PA 40,000

Silver Bell Business Center
 Eagan, MN 11,500

Silver Bell Commons
 Eagan, MN 235,000

Silver Bell Commons II
 Office/Showroom Complex, Eagan, MN 110,000

Skyline Displays, Inc.
 Office/Manufacturing/Showroom, Eagan, MN 315,000

Smarte Carte Inc.
 White Bear Lake, MN 58,000

Specialty Manufacturing Company
 White Bear Lake, MN 118,000

Strommen Building
 Minneapolis, MN 12,000

Ternes Register
 White Bear Township, MN 57,000

Tetra-Laval Group
 Tetra Rex World Headquarters Buffalo Grove, IL 68,000
 Tetra Rex, Minneapolis, MN 75,000
 Tetra Rex Packaging Systems, Minneapolis, MN 30,000
 Tetra Pak Research Center, Buffalo Grove, IL 22,000
 Tetra Pak Service Group, Buffalo Grove, IL 20,000
 Tetra Pak Flexible Packaging System, Lincolnshire, IL 32,000
 Tetra Pak Greenwood, Greenwood, IN 50,000

Trend Enterprises
 Office/Warehouse, Burnsville, MN 79,000

Turso Company
 St. Paul, MN 40,000
 Fort Dodge, IA 34,000

Twin City Barge
 St. Paul, MN 18,900



Polaris, Inc.



Seagate Technology, Longmont



Seagate Technology TCO



Specialty Manufacturing Company

PROJECT SUMMARY

INDUSTRIAL & DISTRIBUTION

Twin City Glass
St. Paul, MN 30,400

United Mailing
Minneapolis, MN 180,000

Universal Hospital Services
Minneapolis, MN 20,100

Upsher-Smith Laboratories
Plymouth, MN 15,000

Vadnais Heights Office/Warehouse
Vadnais Heights, MN 31,000

Vikings Food Service
Burnsville, MN 53,000

Walcher Warehouse
Minneapolis, MN 51,000
St. Paul, MN 30,000

Wayne Transport
Rosemount, MN 9,700

Westin-Nielson
Vadnais Heights, MN 17,000

Winslow Printing
Minneapolis, MN 50,000
Addition 43,000

Wolkerstorfer Company, Inc.
St. Paul, MN 48,000

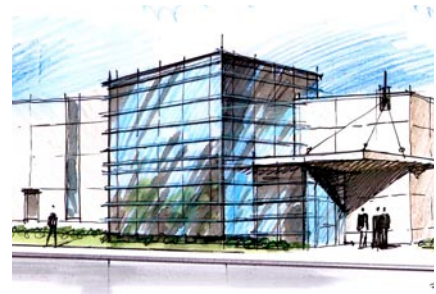
Yankee Place
Eagan, MN 217,000



Skyline Displays, Inc.



Tetra Rex World Headquarters



Twin City Glass



Smarte Carte Inc.